

RADIO CONTROL ROBOT



Sir Galaxy™

INSTRUCTIONS

I'm Sir Galaxy! I'm one of Mattel's Radio Control toys. My insides have well-made sensitive electronic mechanisms. Handle me with the care you would give your transistor radio, and I'll walk, talk, give and take orders, even carry things for you.

Keep me clean and dry, use alkaline batteries, replacing them when I tend to slow down. Keep my switches in the off position when I'm not in use, remove my batteries, and put me away in my box for storage.

Look out for interference in my communications due to other C.B. radios, electronic garage doors or other R/C toys.

90-DAY LIMITED WARRANTY

Mattel Toys warrants to the original consumer purchaser of any of its Electronic Toys that the product will be free of defects in material or workmanship for 90 days from the date of purchase.

During the 90-day warranty period the product will either be repaired or it will be replaced with a reconditioned model of equivalent quality (at our option) without charge to the purchaser when returned either to the dealer with proof of the date of purchase, or when returned prepaid and insured, with proof of the date of purchase, to Mattel Electronics Repair Center, 5150 Rosecrans Avenue, Hawthorne, CA 90250.

Units returned without proof of the date-of-purchase, or units returned after the 90-day warranty period has expired, will be repaired, or replaced with a reconditioned model of equivalent quality, (at our option) for a service charge of \$25.00. Payment must be made by check or money order. This out-of-warranty service will only be available for one year from the date of purchase. All out-of-warranty units must be returned postage prepaid and insured to Mattel Electronics Repair Center.

MATTEL TOYS WILL NOT BE LIABLE FOR LOSS OR USE OF THE PRODUCT OR OTHER INCIDENTAL OR CONSEQUENTIAL COSTS, EXPENSES OR DAMAGES INCURRED BY THE PURCHASER. ANY IMPLIED WARRANTIES ARE LIMITED IN DURATION TO THE 90-DAY PERIOD FROM THE ORIGINAL DATE-OF-PURCHASE.

This warranty gives you specific legal rights and you may also have other rights which vary from state to state so the foregoing limitations may not apply to you. This warranty does not cover damage resulting from accident, unreasonable use, neglect, improper service or other causes not arising out of defects in material or workmanship.

HOW TO GET SERVICE FROM THE MATTEL ELECTRONICS REPAIR CENTER ON YOUR ELECTRONIC TOY DURING AND AFTER THE 90-DAY WARRANTY PERIOD.

During the 90-Day Warranty Period, you may have a defective toy replaced at the dealer from which it was purchased. If, however, during this 90-Day Warranty Period, you choose to obtain repair or replacement service from the Mattel Electronics Repair Center, please make the arrangements described below.

1. Pack the product carefully in the original box. If the box is not available, use a good carton with plenty of newspaper or other padding all around and tie it securely.
2. Carefully print on the box or carton the following name and address: MATTEL ELECTRONICS REPAIR CENTER, 5150 ROSECRANS AVENUE, HAWTHORNE, CALIFORNIA 90250. Also, don't forget to show your return address.
3. Put parcel post stamps on the package; insure the package; then mail.

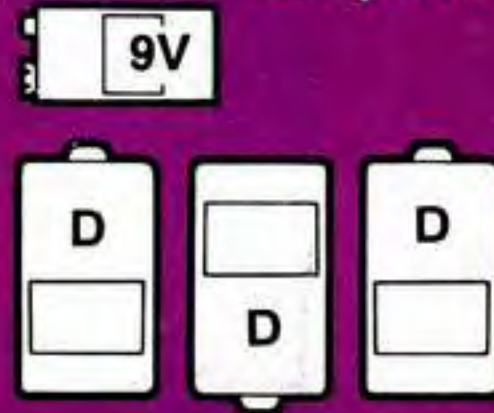
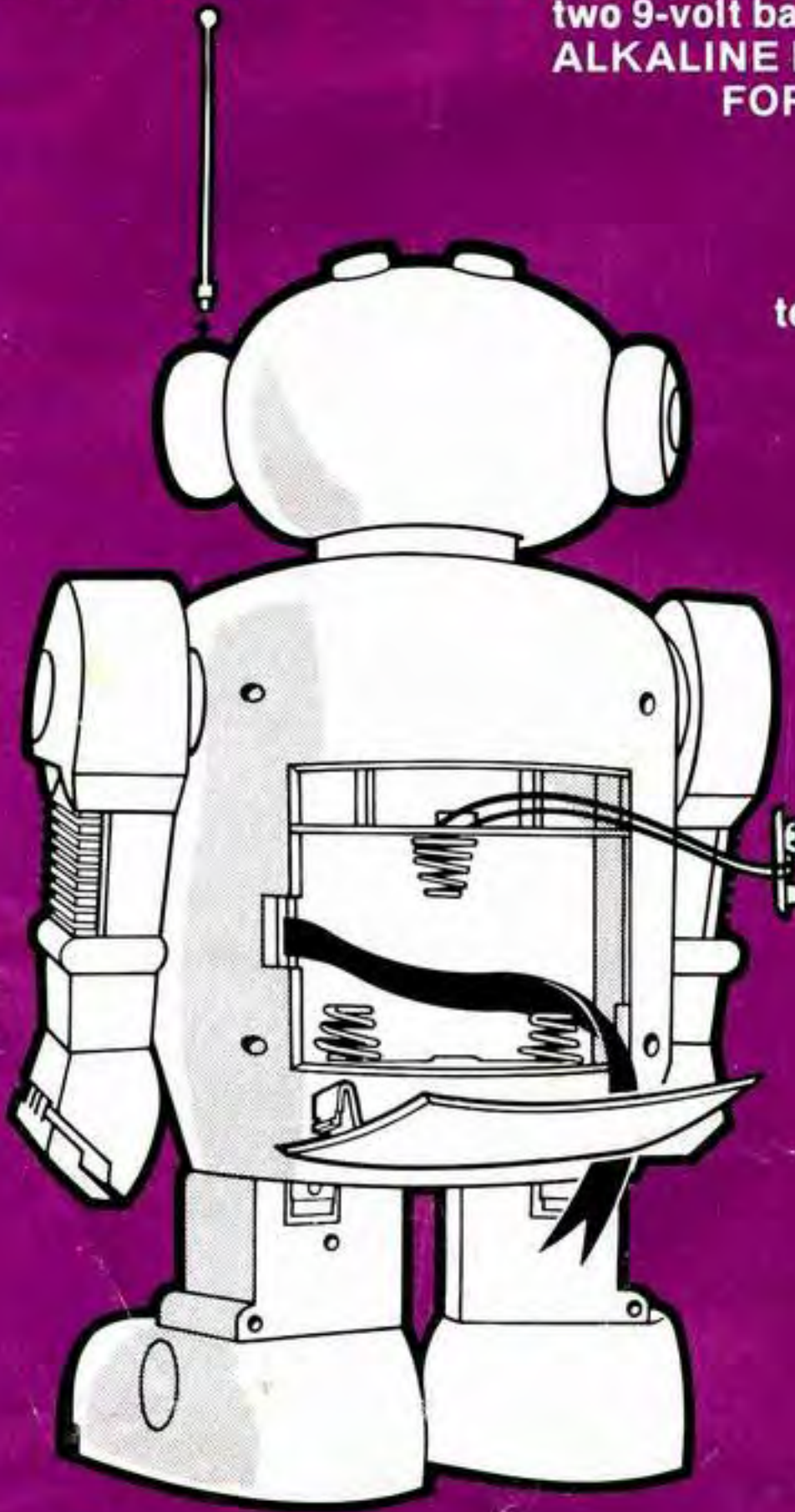
After the 90-Day Warranty Period and up to one year from the date-of-purchase, do all of the above plus enclose your check or money order for \$25 as payment for the repair service.

SCREW ANTENNA INTO
TOP OF LEFT EAR
OF SIR GALAXY

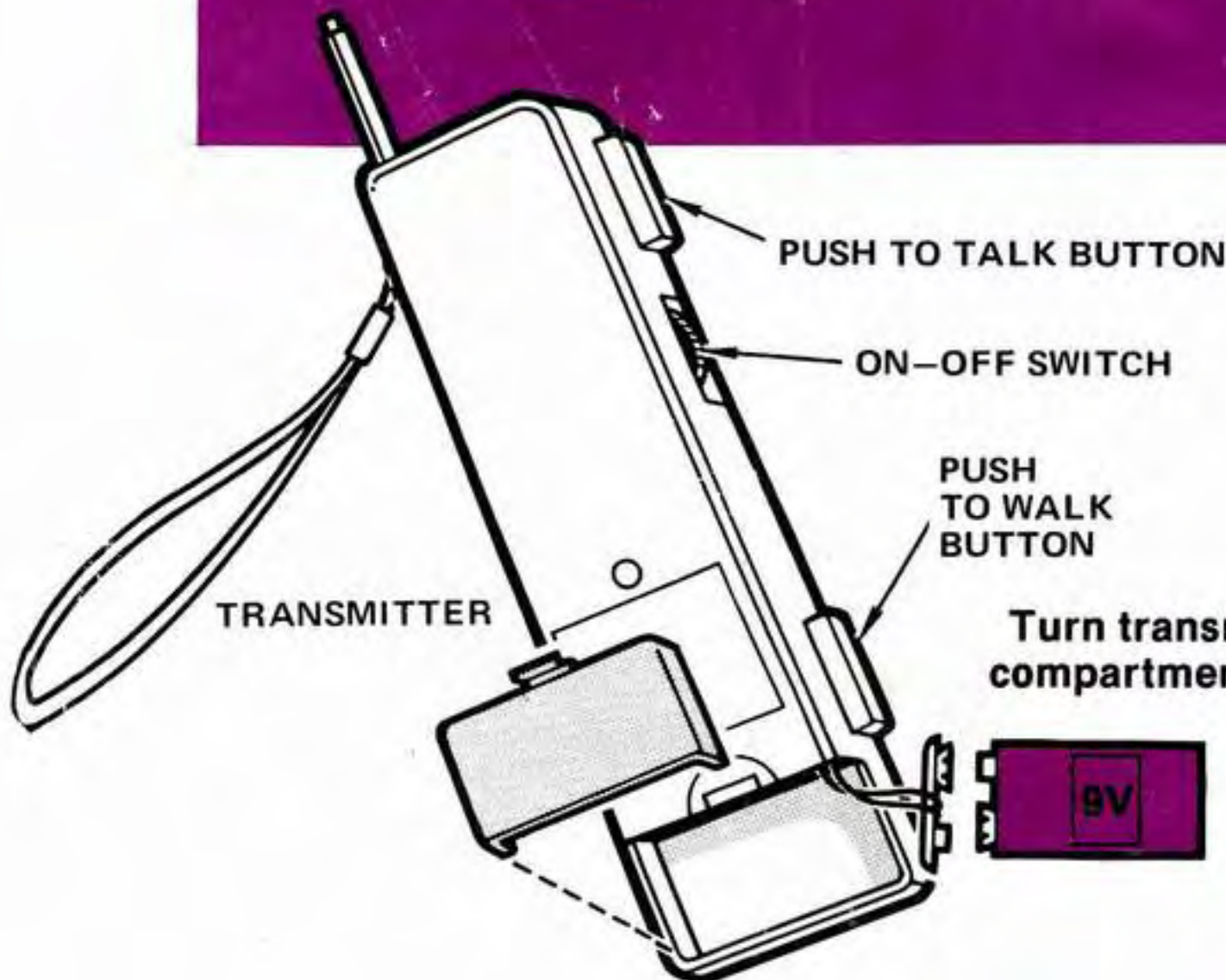
INSTALL MY BATTERIES
Note: You will need three D size batteries and
two 9-volt batteries. (Batteries not included).
**ALKALINE BATTERIES RECOMMENDED
FOR LONGER OPERATION TIME.**

Remove battery compartment
cover in the back of Sir Galaxy.
Snap a 9-volt battery to the
terminals in top of compartment.
Place battery on its shelf in
compartment.

Install the three D size
batteries, as shown. Follow
the drawing closely to put
batteries in correctly. Be sure
ribbon is placed against back
wall of compartment before
installing batteries. Replace
compartment door.



NOTE BATTERY SEQUENCE



Turn transmitter over and slide battery
compartment cover open. Insert a 9-volt
battery. Replace cover.

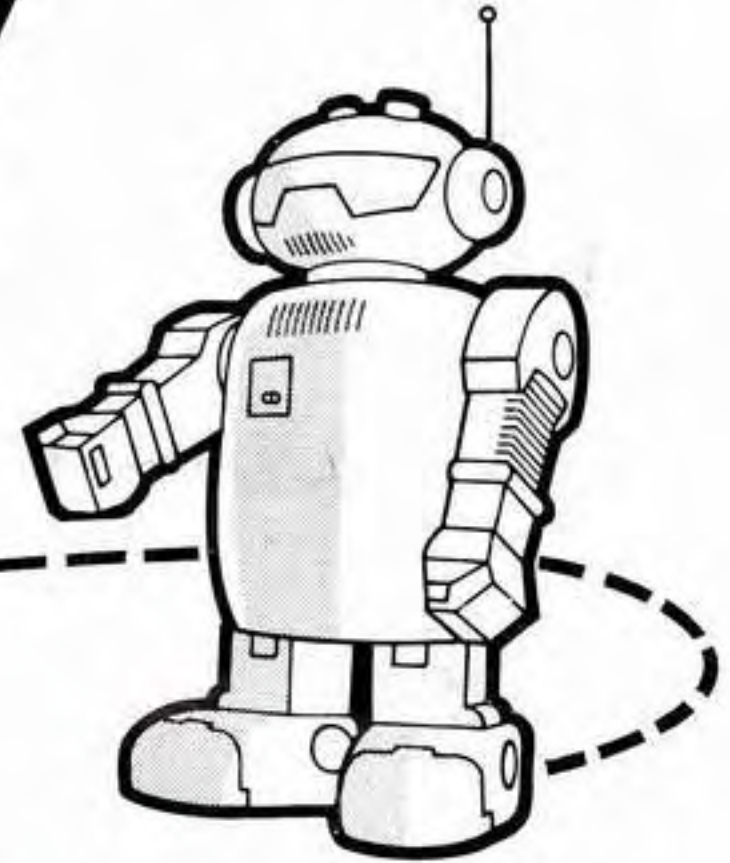


READY FOR ACTION

Turn the robot switch ON. The on-off switch is on robot's chest. You will hear a "rushing" noise. Place the robot on a smooth floor.

Pull the antenna out all the way. Turn transmitter switch on to full volume.

PUSH TO TALK BUTTON

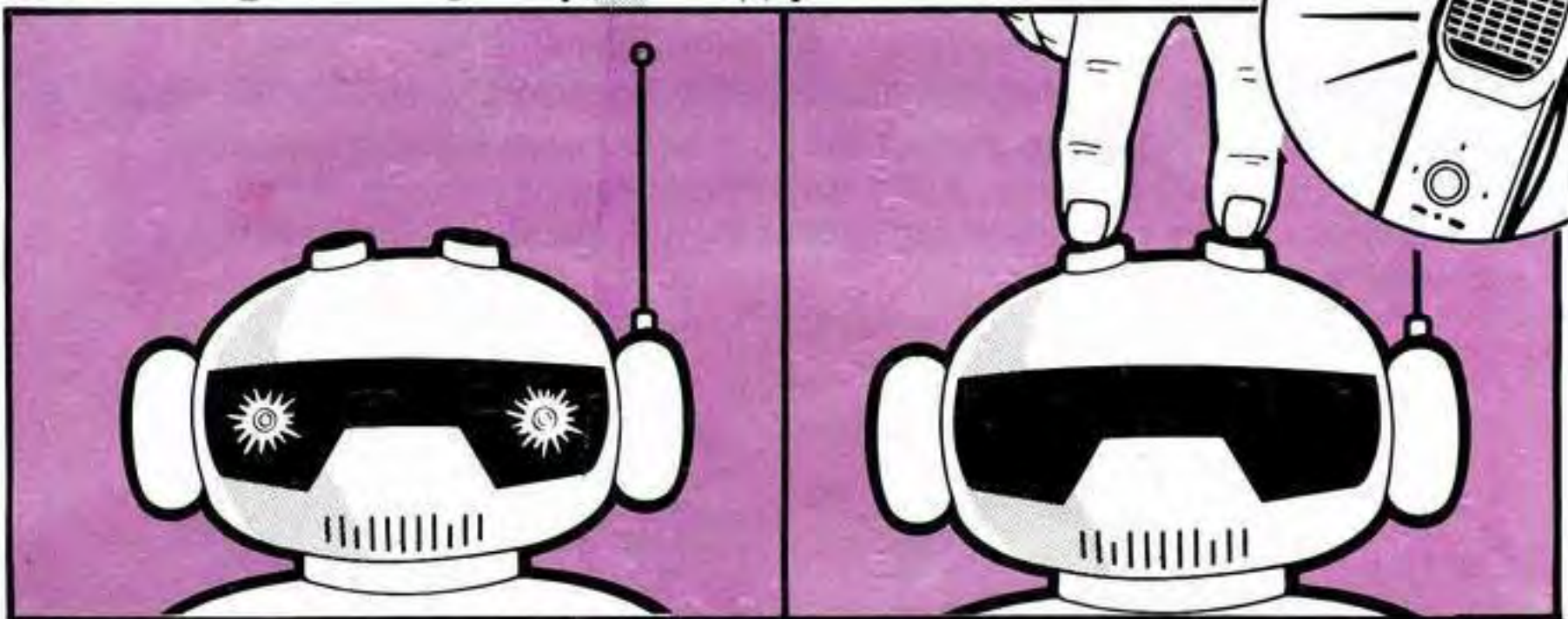


● **MAKE SIR GALAXY WALK**
Push PUSH TO WALK button on transmitter. The robot will move forward and his head will turn. Release button to make robot stop. Make robot turn. Push PUSH TO WALK button and turn top knob to "R" for right turns and "L" for left turns.

● **TALK THROUGH SIR GALAXY**
Push "Push To Talk" button. Speak into the SPEAKER on transmitter. Keep your mouth about 1 inch from speaker. Your voice will come out of Sir Galaxy. Watch the robot's eyes blink to the sound of your voice.

● **SIR GALAXY TALKS BACK**
Push TALK button on the robot's head and talk into the top of his right ear. Your voice will come out through the transmitter.

ALERT



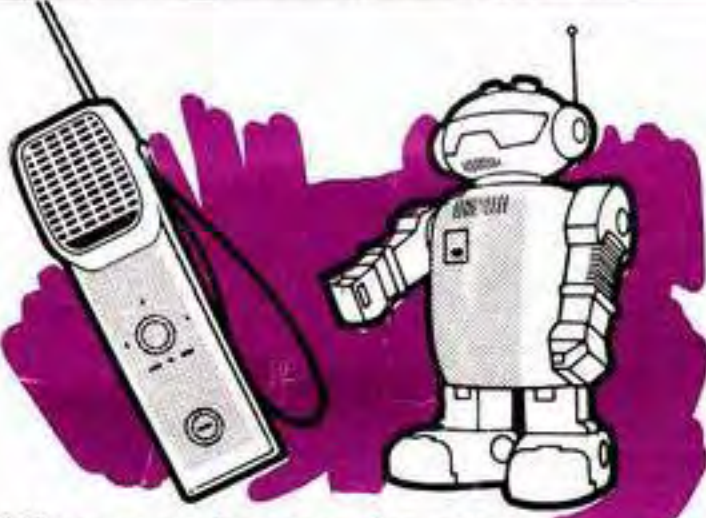
SEND ALERT TO SIR GALAXY
Push Alert button and PUSH TO TALK button on transmitter at the same time. The "alert" will come from your robot and his eyes will flash.

SIR GALAXY SENDS ALERT
Push both the ALERT and TALK buttons on robot's head. This will send an "alert" to the transmitter.

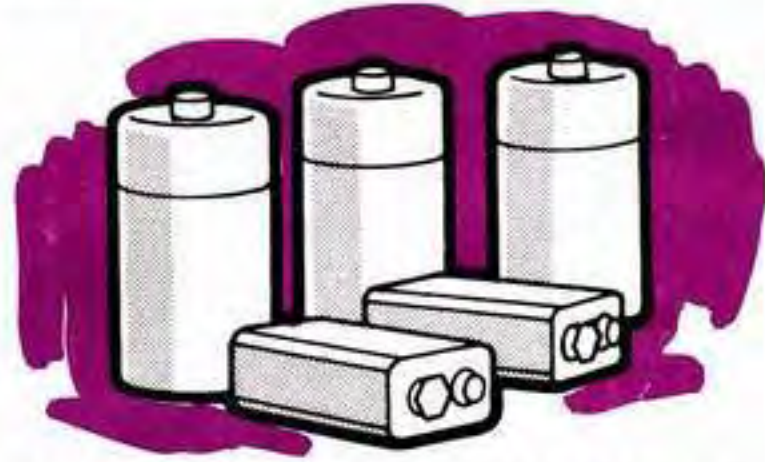
SPECIAL FEATURES

Sir Galaxy can carry things in his hands. Put a note in his hand and send him to deliver it to a friend. You can lift his arms up and down, too.

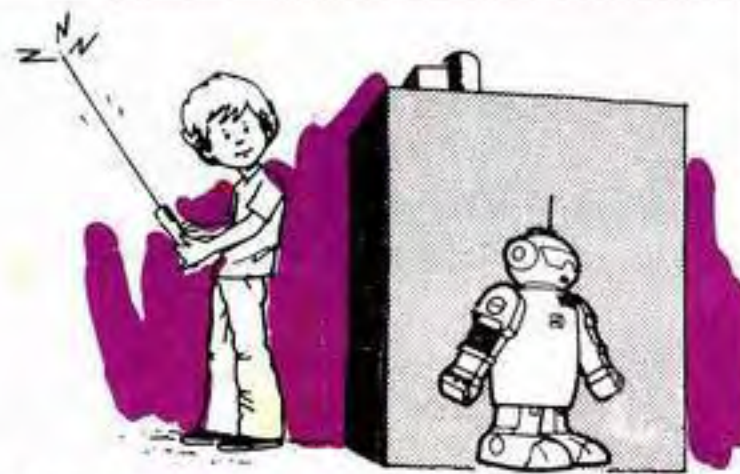
IMPORTANT OPERATING TIPS



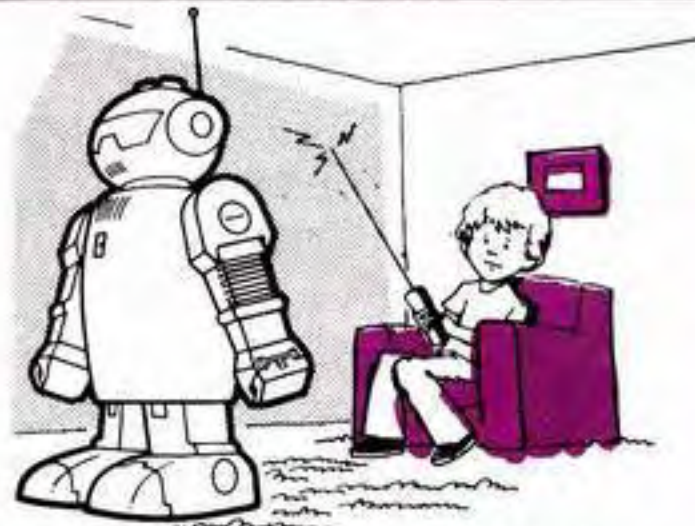
When not in use, be sure switches on robot and transmitter are OFF.



When not using for a long period of time, remove all batteries from robot and transmitter.



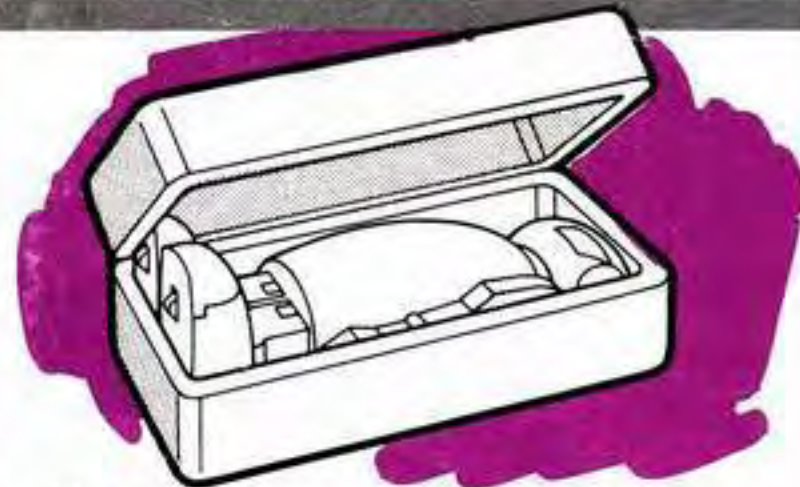
Don't try to operate transmitter to robot through walls or other solid objects.



Don't operate robot on thick carpeting.



Have parent or older person remove foreign matter from robot's wheels using tweezers.



Use package box to store robot and transmitter.

OTHER TIPS: 1. When operating, be sure both robot's and transmitter's switches are ON all the way. 2. Be sure batteries are fresh. 3. Be sure transmitter antenna is pulled out all the way. 4. Be sure robot's antenna is screwed in tightly.

